



Explain Everything™ Simple Interface Introduction

Pam Buffington and Peter Tierney-Fife

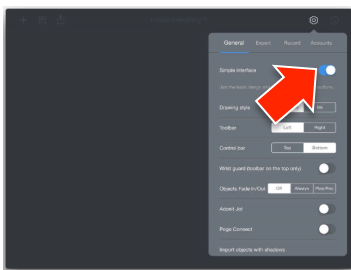
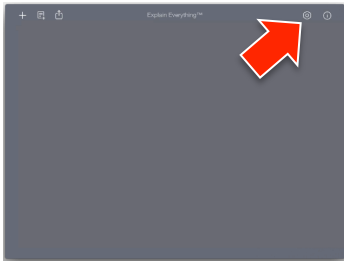


Overview

The Explain Everything™ iPad app enables students and teachers to create screencasts including a video of the iPad screen and accompanying audio. The recent versions of Explain Everything™ include the option to display a Simple Interface, which reduces the number of tools, controls, and options available on the editing screen. This feature may be useful when working on simpler projects or for younger students. Projects created in one interface (the normal interface or the Simple Interface) can be saved as an Explain Everything™ project and then opened and edited in the other interface.

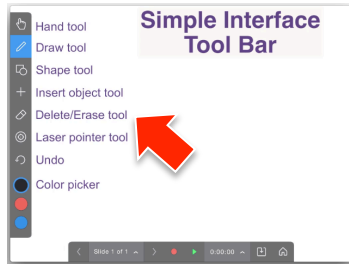
Turn on the Simple Interface

In the Explain Everything™ home screen, select the Settings and Preferences icon near the upper right (which looks like a gear).



Next, slide the Simple Interface toggle to the right, so the left side is a blue color.

Close the Settings and Preferences menu and open or create a project to use the Simple Interface.



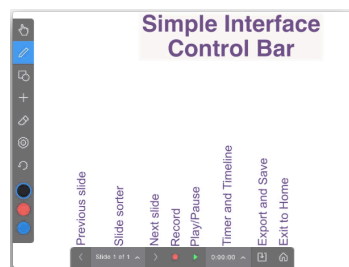
The Simple Interface Tool Bar

The Simple Interface includes 8 tools:

- » Hand tool
- » Draw tool
- » Shape tool
- » Insert object tool
- » Delete/Erase tool
- » Laser pointer tool
- » Undo
- » Color picker

Four tools are **not** included in the Simple Interface:

- » Text tool
- » Inspector
- » Zoom and Pan
- » Presentation mode



The Simple Interface Control Bar

The Simple Interface includes 8 control buttons:

- » Previous slide
- » Slide Sorter (which includes a New Slide button)
- » Next slide
- » Record
- » Play/Pause
- » Timer and Timeline
- » Export and Save
- » Exit to Home

Five control buttons are **not** included in the Simple Interface:

- » New slide
- » Rewind
- » Fast forward
- » Recording mode switch
- » Save (the option is included with the Export button in the Simple Interface)

Highlighted Changes with the Simple Interface

- » Inspector features are not available (e.g. grouping, layering, copying, and locking)
- » Some tools have more limited options, for example:
 - » The Undo tool does not have a redo feature
 - » The Shape tool does not show shadows or different color borders
 - » The Laser pointer style is not changeable (it is the style which was last selected in the normal interface)
 - » The Insert tool does not include math equations, existing sound, or new browser
- » Users cannot type text using the keyboard
- » The color picker has reduced options
- » Video editing controls are simplified and the features reduced